

# SMARTONE™ C BATTERY INSTALLATION GUIDE

## STEP 1

Unscrew the four Phillips-head screws located on the back of the unit with a #1 Phillips-head tip.



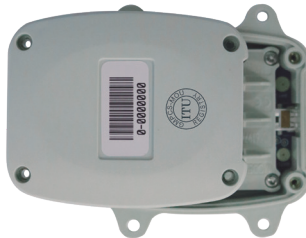
## STEP 2

Separate the unit halves to install or replace batteries. Make sure to use L92 Ultimate Lithium AAA batteries and insert them as instructed on the battery compartment. Make sure the black gasket surrounding the battery compartment lays flat on the groove before reconnecting the two unit halves.



## STEP 3

Replace the battery compartment making sure the contact springs are the correct orientation. Screw down all four Phillips-head screws in a crisscross pattern. **DO NOT OVERTIGHTEN SCREWS.** Tighten to 36 in-oz (25.4 N-cm) torque setting.



**If leaving switch in the ON position,** changing batteries while indoors or with an obstructed view of the sky may result in not receiving a power on message. To receive a “power on” message, restart unit by switching off then back on with a clear view of the sky.

